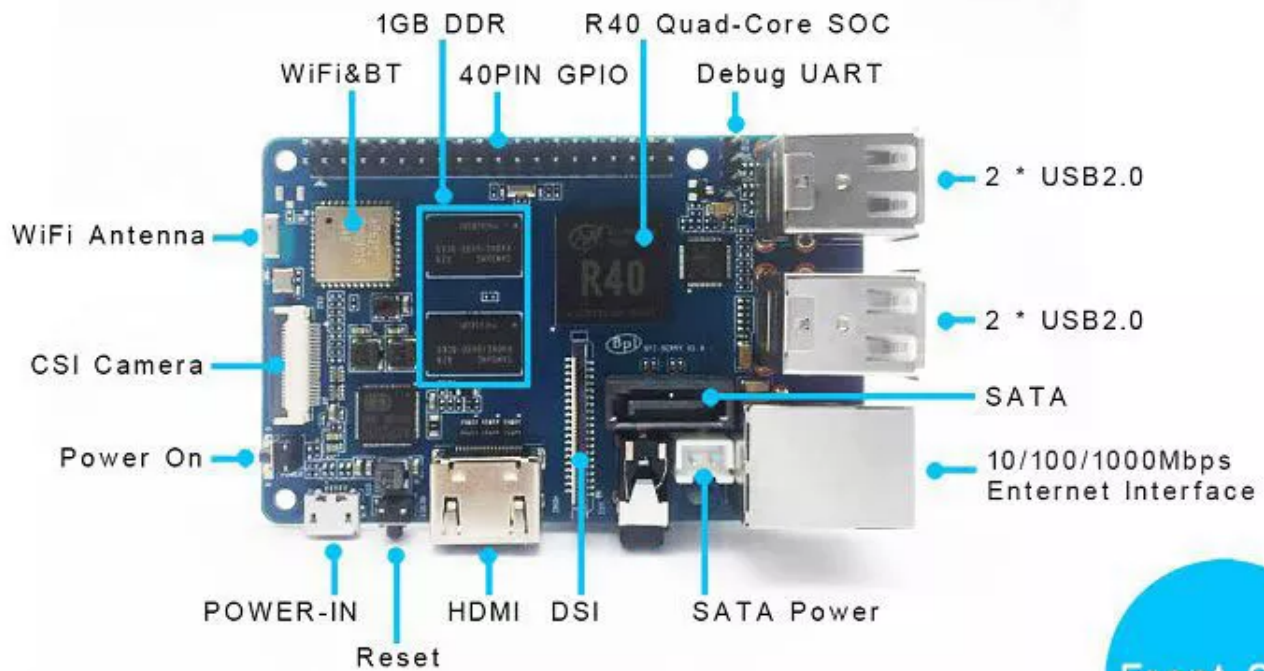
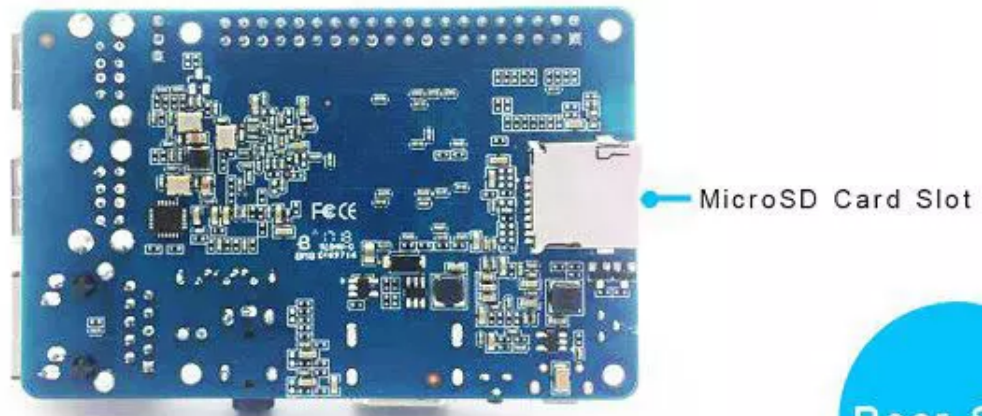


Wiki

[Wiki Hersteller](#)



Front Side



Rear Side

HardWare Specification of Banana pi BPI-M2 Berry

Soc	Allwinner A40i/R40/V40
-----	------------------------

CPU	quad-core cortex -A7,the most power efficient CPU core ARM's ever development
GPU	dual-core MALI-400 MP2 and runs at 500MHz, capable of 1.1 Gpixel/s throughput. Graphics capabilities are slightly higher than the original Xbox's level of performance. The GPU provides OpenGL ES 2.0, hardware-accelerated OpenVG, 1080p45 H.264 high-profile encode and decode.
SDRAM	1GB DDR3 with 733MHz(shared with GPU)
SATA	support SATA interface
GPIO	40 Pins Header, 28×GPIO, some of which can be used for specific functions including UART, I2C, SPI, PWM, I2S.
On board Network	10/100/1000Mbps Ethernet (Realtek RTL8211E/D)
Wifi Module	WiFi 802.11 b/g/n (AP 6212 module on board)
Bluetooth	BT4.0
On board Storage	MicroSD (TF) card,No eMMC onboard
Display	4-lane MIPI DSI display,or RGB panel or LVDS panel,TV-out on HDMI V1.4
Video	Multi-format FHD video decoding, including Mpeg1/2, Mpeg4, H.263, H.264, etc H.264 decode up to 1080P60,support video encoding:High-definition(HD)H.264 video encoder is up to 1080P@45fps
Audio outputs	HDMI, analog audio (via 3.5 mm TRRS jack), I2S audio (also potentially for audio input)

Camera	A CSI input connector Camera:Supports 8-bit YUV422 CMOS sensor interface,Supports CCIR656 protocol for NTSC and PAL,Supports 5M pixel camera sensor ,Supports video capture solution up to 1080p@30fps
USB	4 USB 2.0 host, 1 USB 2.0 OTG
Buttons	Reset button, Power button, U-boot button
Leds	Power status Led and RJ45 Led
IR	No onboard IR receiver
DC Power	5V/2A with micro USB port
battery	No 3.7V lithium battery power support
Sizes	85mmX56mm,same size as raspberry pi 3
Weight	40g

Revision #5

Created 2023-04-01 08:55:15 UTC by willi

Updated 2024-11-10 01:09:25 UTC by willi